

Installation Note

Agilent 89601A Demo Software with E4406A



Agilent Technologies

Part Number 89600-90019
Printed in USA March 2002

Notice.

The information contained in this document is subject to change without notice.

Agilent Technologies makes no warranty of any kind with regard to this material, including but not limited to, the implied warranties of merchantability and fitness for a particular purpose. Agilent Technologies shall not be liable for errors contained herein or for incidental or consequential damages in connection with the furnishing, performance, or use of this material.

Installing Agilent 89601A Demo Software with E4406A

This sheet includes instructions for installing 89601A software and configuring a LAN interface to the E4406A. The instructions assume that your computer has a LAN card installed and configured for TCP/IP protocol. For information on computer system requirements, refer to the Performance Guide included with this package.

For instructions on configuring a GPIB connection rather than LAN, refer to the 89600 Installation and Service Guide (available as install.pdf in the manuals directory on the 89600 installation CD). You can use either a GPIB or LAN interface; however, the 89600 software will not function properly if both are configured simultaneously.

Install 89600 VSA Software

Insert the Agilent 89600 Vector Signal Analyzers Installation CD-ROM and follow the instructions in the installation wizard.

1. When the Installation Manager window opens, click **Install Agilent 89600 VSA**.
2. In the Installation Options window, select **Full Installation with LAN & GPIB** from the pull-down list.
3. After the software is installed, exit the Installation Manager window.

Configure LAN interface

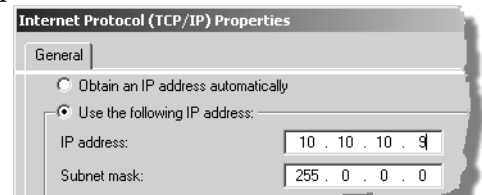
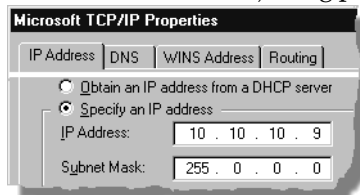
You must ensure that the IP addresses for your computer and E4406A are compatible, then configure the LAN interface. The IP address consists of 4 groups of numbers separated by periods (for example 192.192.192.25).

1. If your computer is connected to a Local Area Network, have your network administrator assign an E4406A IP address that will work with your computer. Set the E4406A IP address: press **System, Config IO, IP address**, type the new address using the number keypad, and press **Enter**. Skip step 2 and continue with step 3.
2. If your computer is not on a Local Area Network and you will be connecting directly to the E4406A using a crossover cable, perform these steps:
 - a. Determine the IP address for your computer. Click **Start, Run**. Type cmd and click **OK**. At the DOS prompt, type ipconfig and press **Enter**. If a nonzero IP address is listed, leave it and continue with step b. If the address is "0.0.0.0", go to step d.
 - b. Set the IP address on the E4406A so that the first 3 sections of the IP address are the same as for the computer, and the last section is 1 greater than that for the computer. (For example, if the computer IP address is "192.192.192.25", set the E4406A IP address to "192.192.192.26".) To change the E4406A IP address, press **System, Config IO, IP address**, type the new address using the number keypad, and press **Enter**.
 - c. Continue with step 3.
 - d. Find the IP address for the E4406A (press **System, Config IO, IP address**). Set the IP address for the computer so that the first 3 sections are the same as for the E4406A, and the last section is 1 lower than for the E4406A. (For example, if the E4406A IP address is "10.10.10.10", set the computer address to "10.10.10.9".)

For Windows NT, right click **Network Neighborhood**, click **Properties, Protocols, TCP/IP Protocol, Properties, Specify an IP address**.

For Windows 2000, right click **My Network Places**, click **Properties**, right click **Local Area Network**, click **Properties, Internet Protocol (TCP/IP), Properties, Use the following IP address**.

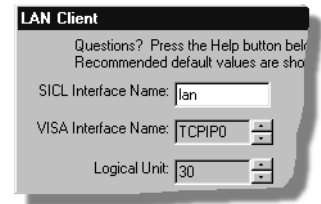
Type the address in the box, using periods (.) to separate the sections.



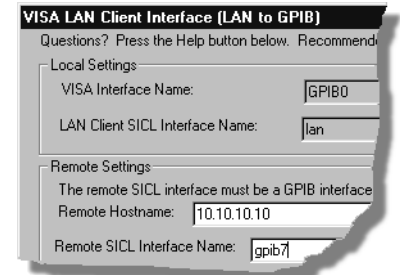
- e. Click in the Subnet Mask box. Accept the default numbers that appear. Click **OK** and close all dialog boxes.
 - f. If you are prompted to reboot your computer, do so now.
3. If the IP address begins with “10.”, set the E4406 subnet mask to “255.0.0.0”. If the IP address begins with anything other than “10.”, set the E4406 subnet mask to “255.255.0.0”. (Press **System, Config I/O, Subnet Mask**, type the new address using the number keypad, and press **Enter**.)
 4. Be sure that both the E4406A and your computer are connected to the LAN, or connect a crossover cable between the computer and the E4406A.
 5. Cycle power on the E4406.
 6. Run the Agilent I/O Libraries I/O Configuration tool. Click the **IO** icon in the task bar, then click **Run IO Config**. (Or click **Start, Programs, Agilent IO Libraries, IO Config**.)
 7. Remove any previously installed interfaces.

VISA name	SICL Name
TCPIP0	lan
GPIB1	n/a

8. Setup the LAN Client.
 - a. Click **LAN Client, Configure**.
 - b. Leave the default selections in the LAN Client dialogue box.
 - c. Remember the name in the Interface Name box.
 - d. Click **OK**.



9. Setup the VISA LAN Client.
 - a. Click **VISA LAN Client, Configure**.
 - b. Enter the E4406A IP address in the Hostname box. (To find the IP address for the E4406A, press **System, Config I/O** on the E4406A front panel.)
 - c. Change the Remote SICL Address to **gpib7** (this **must** be gpib7, not hpib7).
 - d. Confirm that the entry in the SICL LAN Interface box matches the Interface Name that you noted in step 8.
 - e. Remember the VISA Interface Name.
 - f. Click **OK, OK**.



Run the 89600 analyzer

1. Start the analyzer by double-clicking the appropriate icon on your desktop or by clicking **Start, Programs, Agilent 89600 VSA**, then **Spectrum Analyzer** or **Vector Signal Analyzer**.
2. When a dialog box asks if you want to obtain authorization, click **Yes**.
3. On the Trial License tab, click **Accept Trial**.
4. Click OK in the message box, then click **Close** in the authorization box. The 89600 VSA software starts. You can use the demo software for 14 days. Note that only one 14-day trial period is available. You cannot request another trial license. If you want to continue using the 89601A software, you must purchase it.
5. Click **Utilities, Hardware**. Verify that the Simulate hardware box is unchecked.
6. Under ADC1 tab select the address that corresponds to the Agilent E4406A VSA Series Transmitter Tester. Be sure that nothing is selected on the other tabs in the Select Hardware window.